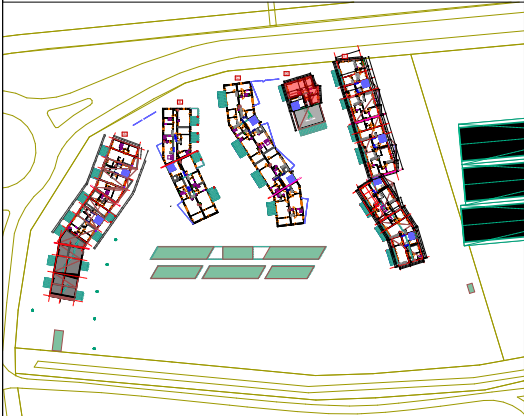


CONSTRUCTION D'UN ENSEMBLE DE LOGEMENTS COLLECTIFS

Route Nationale
62231 BLERIOT

Logement N° D1-21

3 pièces



ETAGE R+2
Orientation : Est-Ouest

D1 - 21, R+2, Surfaces habitables

| | |
|------------------|----------------------------|
| Ch 02 | 11,00 |
| Ch 1 | 12,25 |
| Hall | 7,25 |
| SdB | 8,79 |
| Séjour / Cuisine | 32,27 |
| WC | 2,48 |
| Total | 74,04 m² |

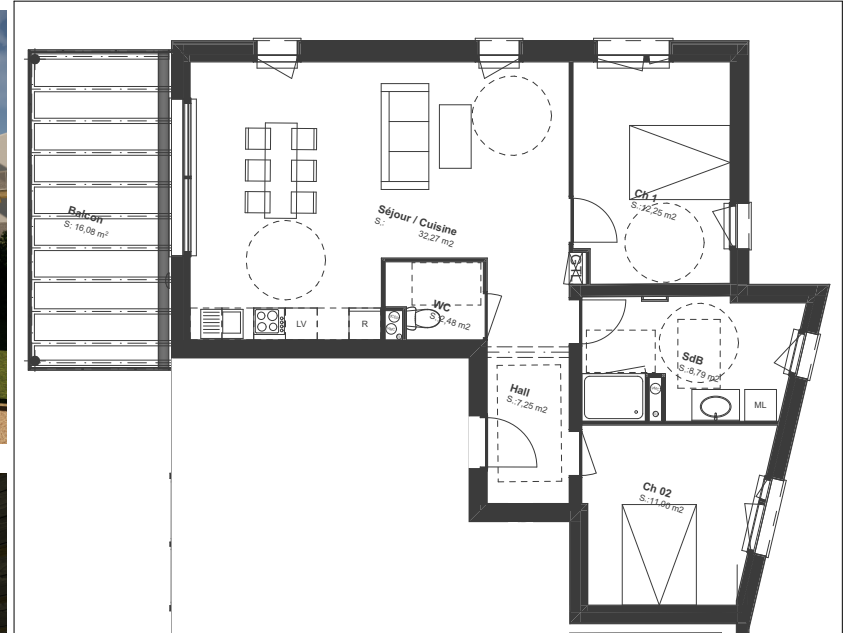
D1 - 21, R+2, Surface Annexe Extérieure

| | |
|--------------|----------------------------|
| Balcon | 16,08 |
| Total | 16,08 m² |

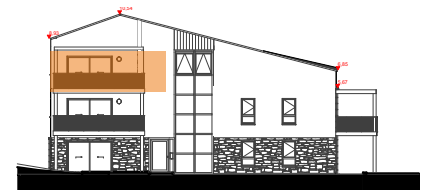


PRIX : 345 000 €

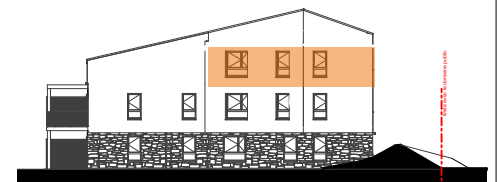
TRAVAUX EN COURS



N



FACADE OUEST



FACADE EST



MAITRE D'OUVRAGE
SCCV La gravière
95 Boulevard Jacquard
62100 CALAIS
0321825864